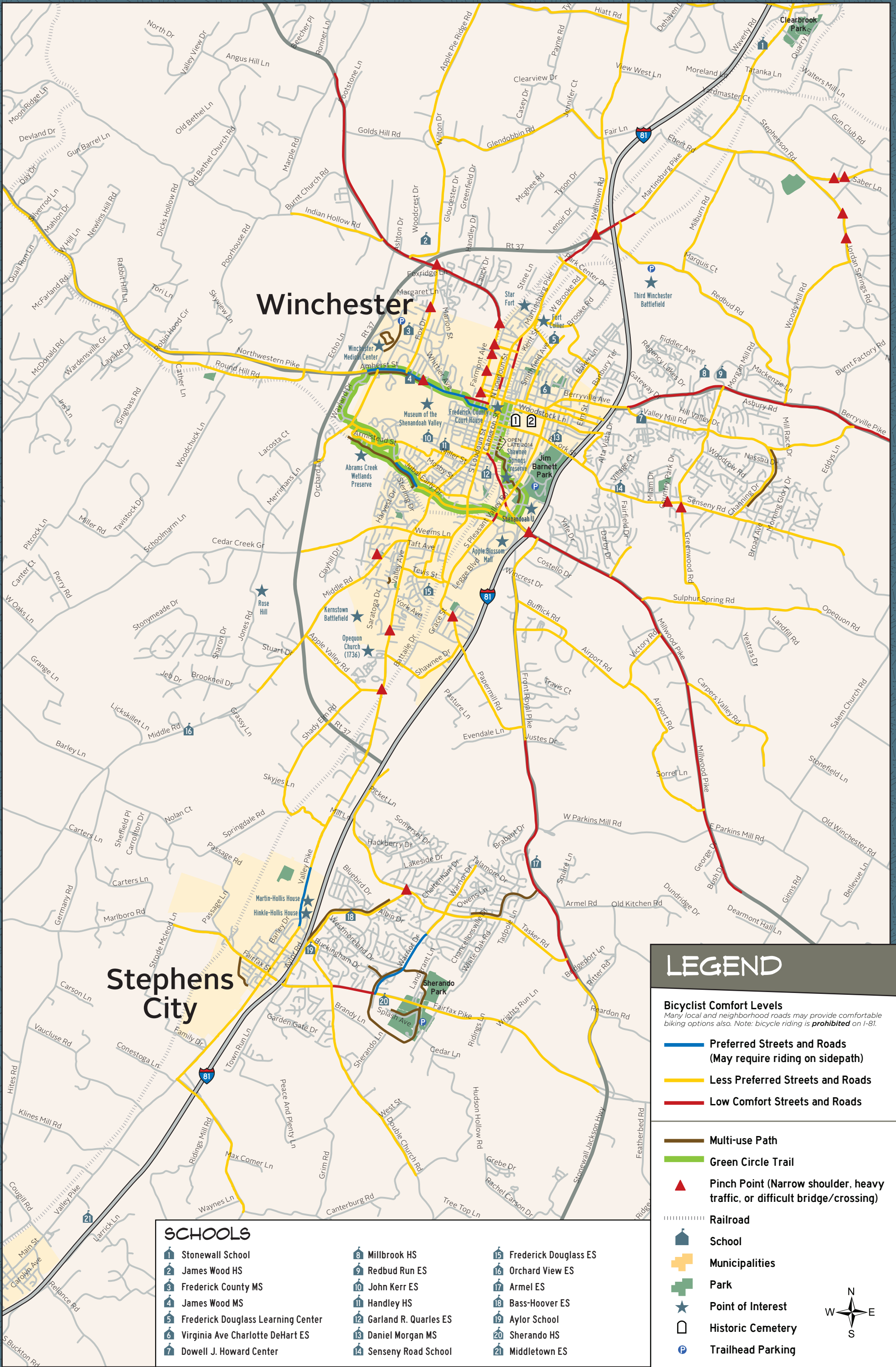


AREA BICYCLING MAP



Winchester

Stephens City

LEGEND

Bicyclist Comfort Levels
 Many local and neighborhood roads may provide comfortable biking options also. Note: bicycle riding is *prohibited* on I-81.

- Preferred Streets and Roads (May require riding on sidepath)
- Less Preferred Streets and Roads
- Low Comfort Streets and Roads

- Multi-use Path
- Green Circle Trail
- ▲ Pinch Point (Narrow shoulder, heavy traffic, or difficult bridge/crossing)

- Railroad
- School
- Municipalities
- Park
- Point of Interest
- Historic Cemetery
- Trailhead Parking

SCHOOLS

- | | | |
|------------------------------------|-----------------------|-----------------------|
| Stonewall School | Millbrook HS | Frederick Douglass ES |
| James Wood HS | Redbud Run ES | Orchard View ES |
| Frederick County MS | John Kerr ES | Armel ES |
| James Wood MS | Handley HS | Bass-Hoover ES |
| Frederick Douglass Learning Center | Garland R. Quarles ES | Aylor School |
| Virginia Ave Charlotte DeHart ES | Daniel Morgan MS | Sherando HS |
| Dowell J. Howard Center | Senseny Road School | Middletown ES |



WINCHESTER



HISTORIC CEMETERIES

- 1 Mt. Hebron Cemetery
- 2 Winchester National Cemetery

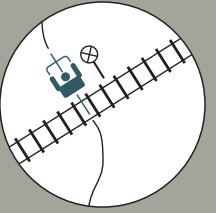
STEPHENS CITY



SAFETY TIPS

AVOID ROAD HAZARDS

Cross railroad tracks at right angles. Watch for drainage grates, slippery manhole covers, oily pavement, gravel, and ice. For better control as you move across bumps and hazards, stand up on your pedals.



TAKE THE LANE WHEN AVOIDING OBSTRUCTIONS

For general riding, keep at least three feet between you and the curb or road edge. The law requires that cyclists ride as close as practicable to the right-hand edge of the road. Cyclists should signal and merge into the center of the lane when passing other cyclists, avoiding dangerous obstructions, or preparing for a left turn.

CHOOSE THE BEST WAY TO TURN LEFT

There are two ways to make a left turn, depending on a cyclist's comfort level in traffic: 1 Like an auto: look back, signal, move into the left lane, and turn left; 2 Like a pedestrian: ride to the far-side crosswalk, then walk your bike across.



USE CAUTION WHEN PASSING

Motorists may not see you, so stay out of the driver's "blind spot." Be careful when passing cars while in a bike lane; drivers don't always signal when turning. Be alert for car doors opening and cars pulling out from side streets and parking spaces.



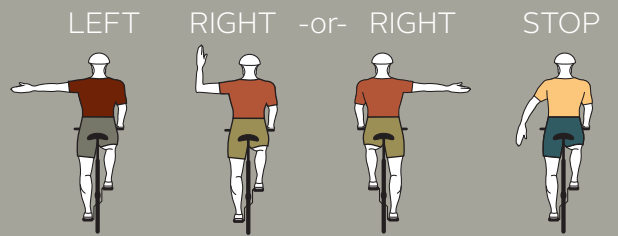
COMMUNICATE AND STAY ALERT

Confirming eye contact with motorists and pedestrians at intersections helps them know you're on the road. Never use headphones while riding. You won't be able to hear what's going on around you. Bicyclists are not permitted to wear earphones in both ears while riding a bicycle.

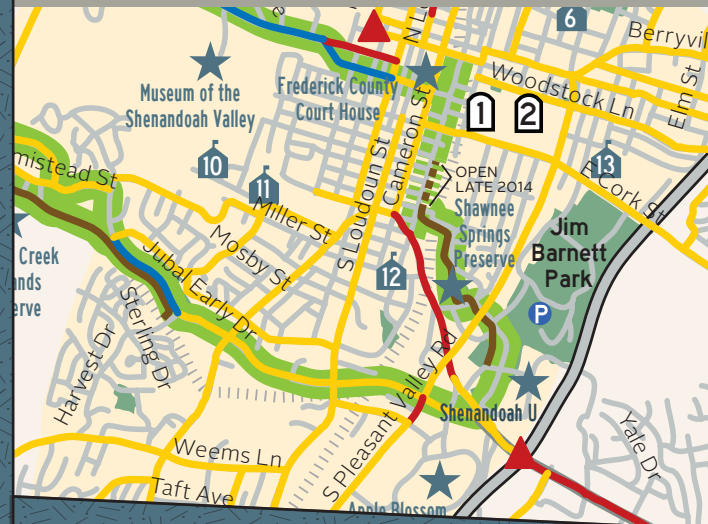


SIGNALING FOR TURNS

Signal as a matter of courtesy and safety, and as required by law.



SAFETY GRAPHICS: CITY OF PORTLAND AND CITY OF CHICAGO



FREE WINCHESTER & STEPHENS CITY Bike Map